



Indianola Preschool, Inc.

• Which class is right for my child?

- 2-Day Classes: Caterpillar & Dragonfly Classes meet Tuesday/Thursday 8-11am. \$125/month



- A good fit for our youngest students. This class is a good fit for students that are ready to learn social skills and other school readiness skills: name recognition, basic shapes, colors, verbal counting to 10, self-help skills, and following directions. Skills are taught through play-based activities throughout the day.



- 3-Day Classes: Bumblebee, Ladybug & Grasshopper Classes meet Monday/Wednesday/Friday 8-11am or 12-3pm. \$165/month



- These classes are a good fit for students who are new to preschool and those who may have previously attended preschool. Skills covered in this class include beginning to write first name in title case, fine motor skills, shapes, reinforcement of colors, verbal counting to 20, introduction to letter sounds and identification uppercase letters. Skills are taught through play-based activities throughout the day.



- 5-Day Classes: Butterfly & Firefly Classes meet Monday-Friday 8-11am or 12-3pm. \$225/month



- These PreK classes are a good fit for students who will be enrolled in kindergarten the following year. Skills covered in the PreK classes include write first name and last name in title case, write and recognize numbers 1-10, shapes, patterning, knowledge of personal information, identification of all upper and lowercase letters, and beginning to make letter-sound connections. These skills are taught throughout the day and incorporated in our monthly studies guided by student interest.



- Transitional Kindergarten: Spider Class meets Monday - Friday 12-3pm. \$250/month



- This class is a good fit for students who are eligible for Kindergarten but need the gift of an extra year. The skills covered will build on the skills learned previously in other preschool classes, offering challenges when appropriate and extra support when needed. The class will combine the structure of kindergarten and with the play-based learning of preschool.



Indianola Preschool, Inc.

• Do you offer Childcare?

- Childcare is available for students 6:45am to 5:15pm on all school days.
 - Childcare is open throughout the school year but is closed on school breaks.
 - During inclement weather, childcare will stay open for delayed starts and early outs but will close when school is canceled.

• Childcare Costs

- Full Day Childcare: \$40 per day
- Before School Childcare only (6:45am to 8:00am): \$7 per day
- After School Childcare only (3:00pm-5:15pm): \$12 per day
- Milk Fee: \$25 per semester (milk is provided for lunch and snack)



• Locations

- Indianola Preschool: Students will be at IPS during all non-class times (6:45am-8:00am, 11am-12pm, 3:00pm-5:15pm)
- PATH Building: Students will spend their mornings/afternoons at the PATH building across the street. We have a room set up there that has lots of developmentally appropriate toys, areas for creativity, snack and rest time.

• Lunch, Snack, More

- All students that stay for lunch time (11:00am-12:00pm) need to bring their own lunches from home. Lunches should be nutritious and include all food groups. Milk and water will be provided by Indianola Preschool.
- Snack Menus for childcare will be provided monthly and milk and water are served.
- Snacks are provided in AM childcare around 9:15am and PM childcare at 3:00pm.

• Rest Time

- All childcare students will have rest time during their day.
 - AM rest time is 10:15am-10:50am.
 - PM rest time is 1:30pm-2:45pm



- Nap mats, sheets, and blankets are provided by IPS. We will send home sheets and blankets weekly to be washed and returned the next week. All students are required to rest if present all day, but not required to sleep.

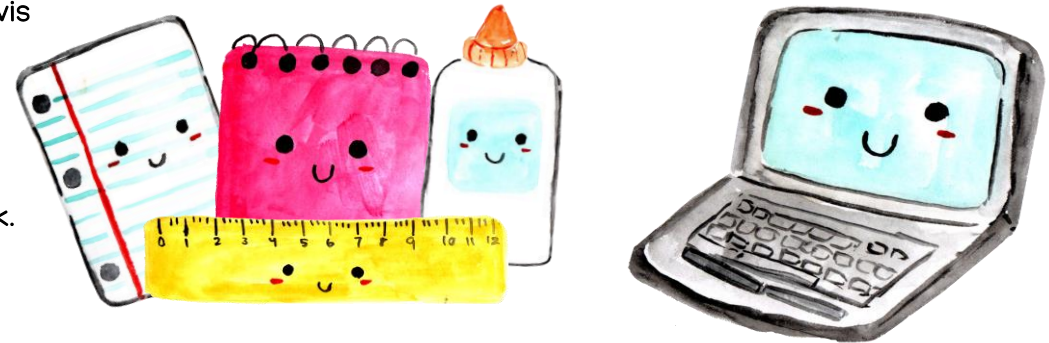


Indianola Preschool, Inc.

- Will my child just play all day?

- YES! We love play!

- Scientists have discovered that it takes approximately 400 repetitions to create a new synapse in the brain, unless it is done in play, in which case it only takes 10-20 repetitions. ~Dr. Karyn Purvis
- Play-based learning curriculum
- 60 minutes of play centers and hands-on activities daily
- 30 minutes of outdoor play in most weather
- No workbooks, daily worksheets, nor sustained seated work.



- Indianola Preschool's Curriculum: Creative Curriculum.

- The Creative Curriculum is a nationally recognized curriculum that is aligned with the Iowa Quality Preschool Program Standards (QPPS). The Creative Curriculum translates new research and theory from the field of early childhood education into a practical, easy-to-understand approach to working with children. It is a comprehensive curriculum that includes a framework for decision making along with a focus on interest areas (blocks, dramatic play, toys & games, art, library, cooking, discovery, music & movement, outdoors and technology)
- Teachers will adapt the curriculum and studies to fit students' needs and interests so that we meet students where they are and support them as they become more independent and develop skills that they need to be successful.

- Assessments

- On-going observations are the basis of our assessments. Parents will receive updates via Brightwheel through pictures and teacher comments at least weekly. Parents are encouraged to ask questions about learning and engage in school to home connections.
- Teachers use formal assessments that are age-appropriate and adapted from the Creative Curriculum objectives of learning. We will share information with parents during Fall Phone Calls and Spring Conferences, or whenever parents have questions.

